



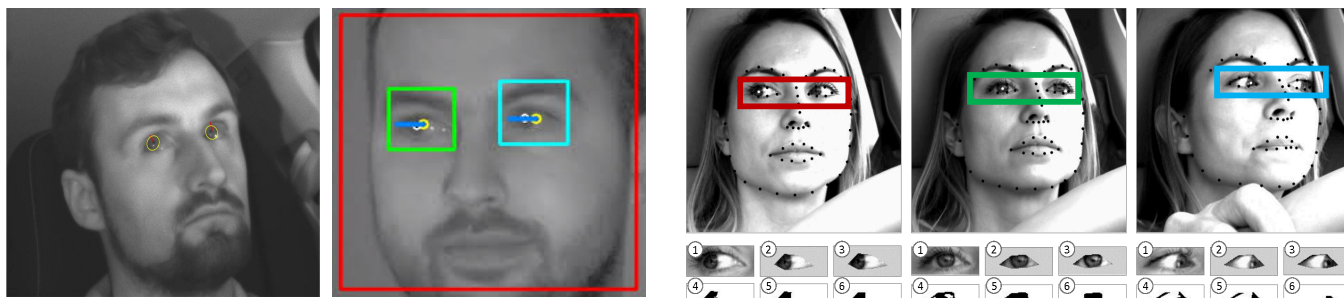
**Driver Monitoring System (DMS)** technology is becoming a core element in the next generation of intelligent vehicles to drivers, enabling better and safer driving, as well as underpinning the safe migration information to autonomous vehicles.



**ULSee's Mission** is to better perform the integral part of the new driver technology by deploy the DMS able dealing with distraction, fatigue, as well as other deadly risk in driving environment.

## Driver Monitoring System (DMS) In Vehicle detect onset of driver behaviors.

ULSee DMS can detect by monitoring driver's face features and gaze direction feature in time. The system uses gaze detection, micro-glance, face features, facial expression, and body postures to identify if driver has become inattentive, either due to drowsiness or distraction. ULSee software is using deep learning for robust and higher accuracy training system.



### 1. Fatigue & Distraction.

Fatigue and micro-asleep at the wheel are often the cause of serious accidents. However, the initial signs of fatigue can be detected before a critical situation arises.

### 2. Driver Behavior Analysis

Driver behavior at wheel are often distracted to driving attention focuses. ULSee technology can accurately categorize driver's action. We can define: Yawning, Eye Closure, Gaze Direction off Road, and Speaking on the phone.